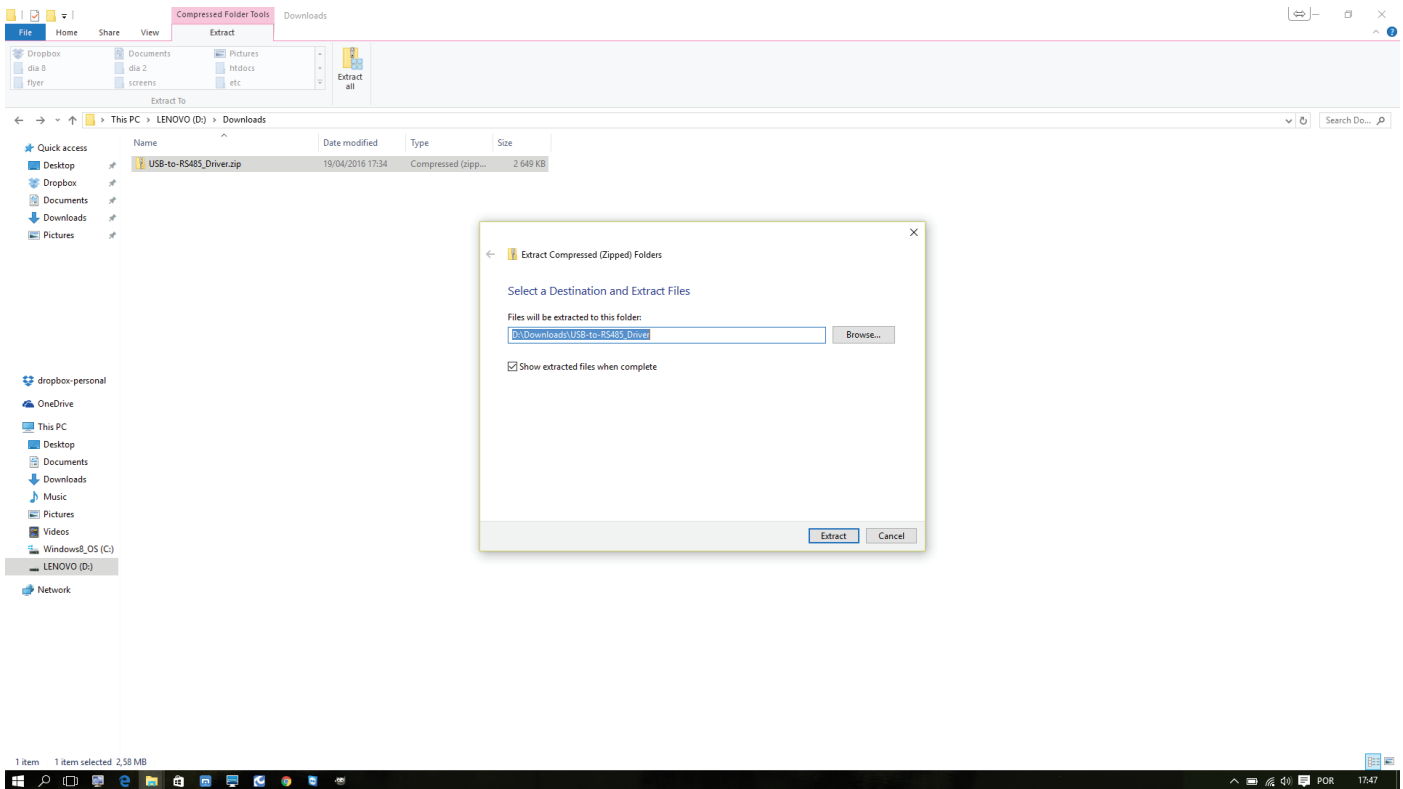
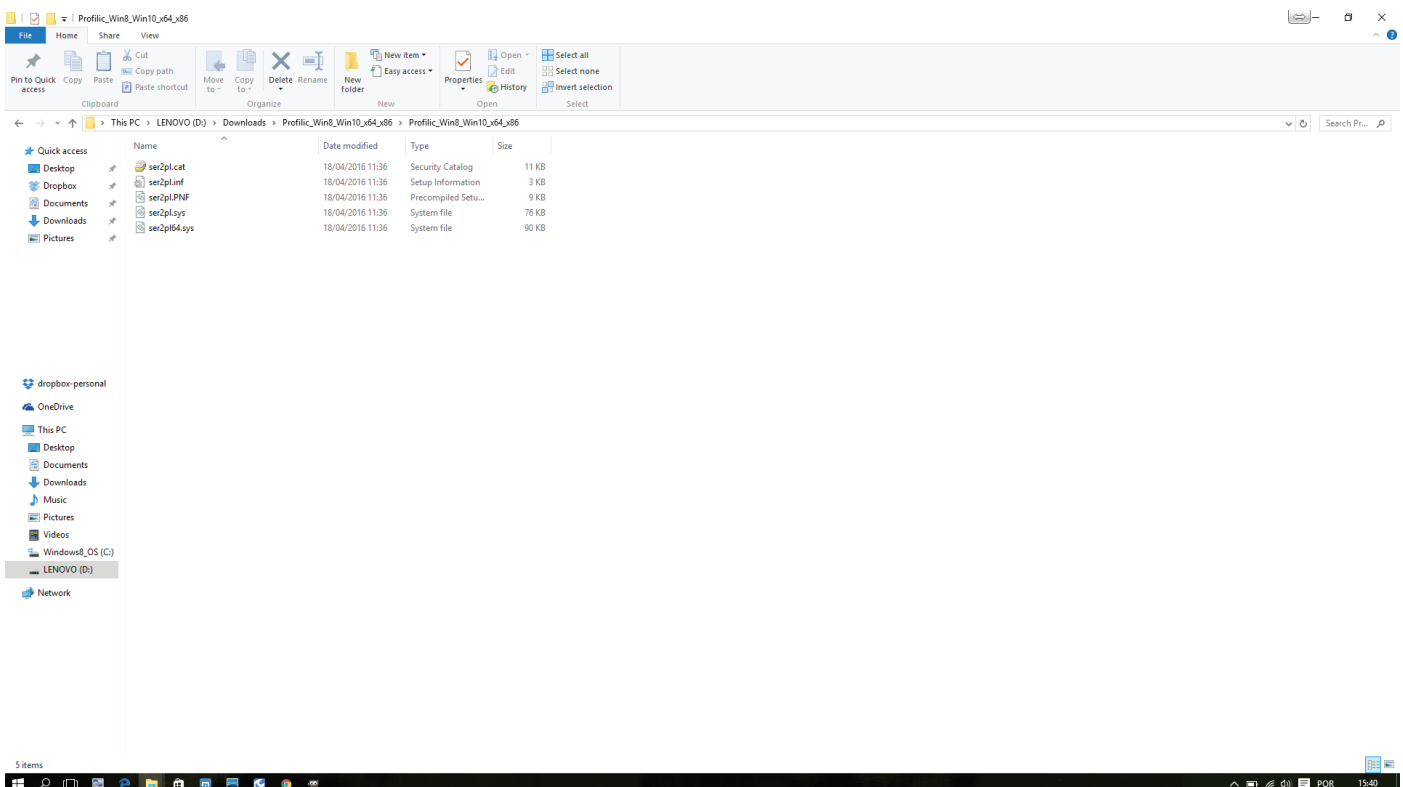


How to install: Converter USB-to-RS485 drivers (for SOUNDWARE) (Windows 8 / 10 | 32 or 64 bits)

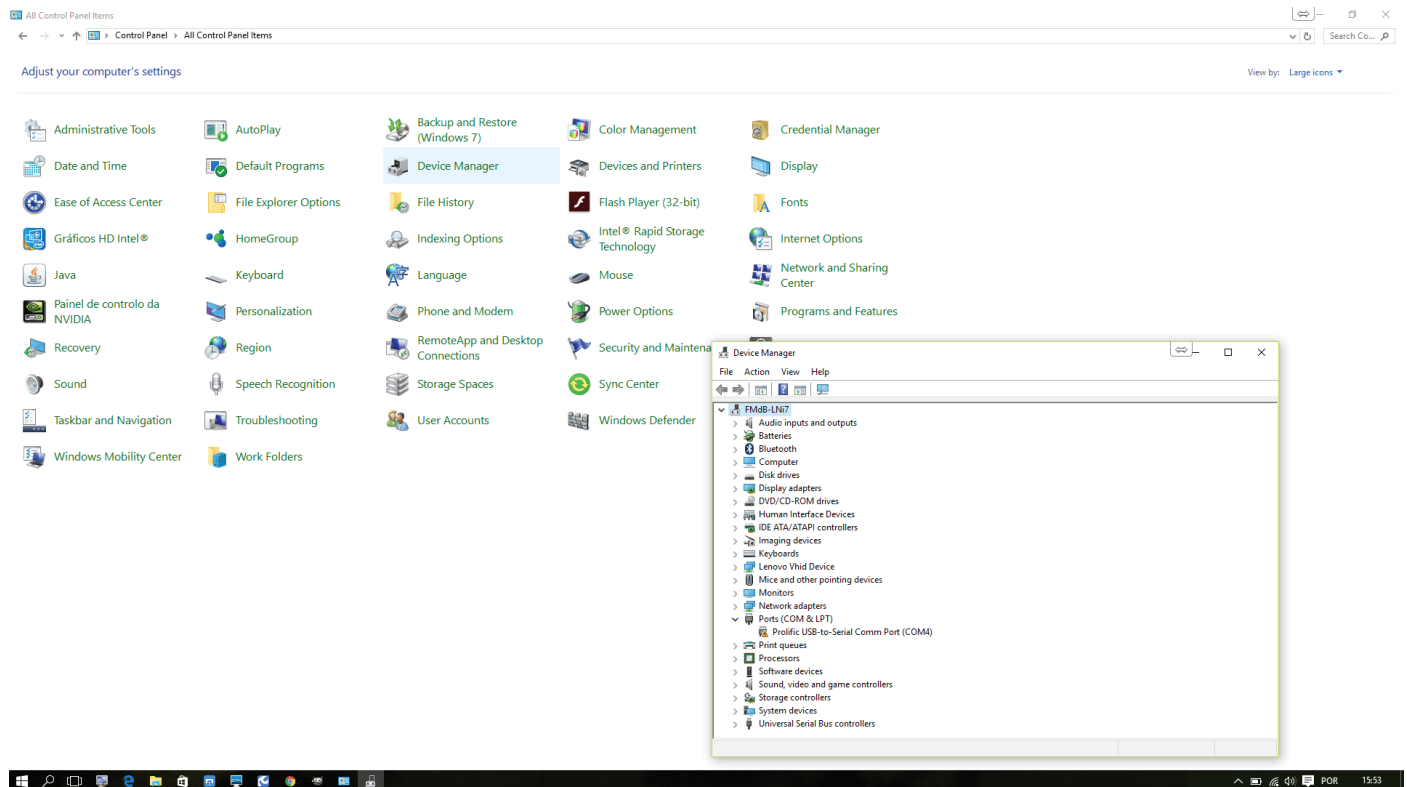
01. Download, Extract “USB-to-RS485_Driver.zip”. Toggle “show extracted files”



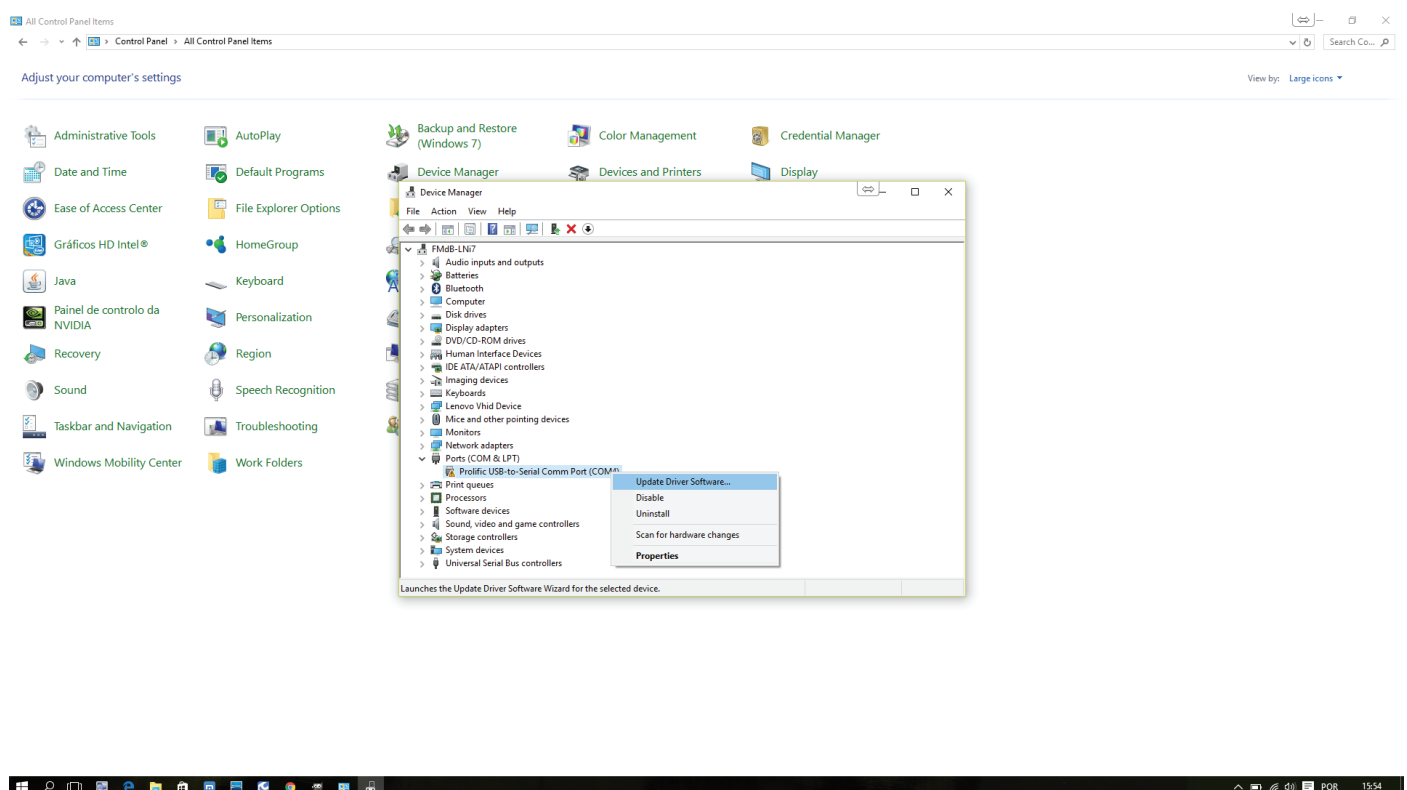
02.a) Inside the extracted directory, click on “USB-to-RS485_Driver”; b) Now, you should have all the above files



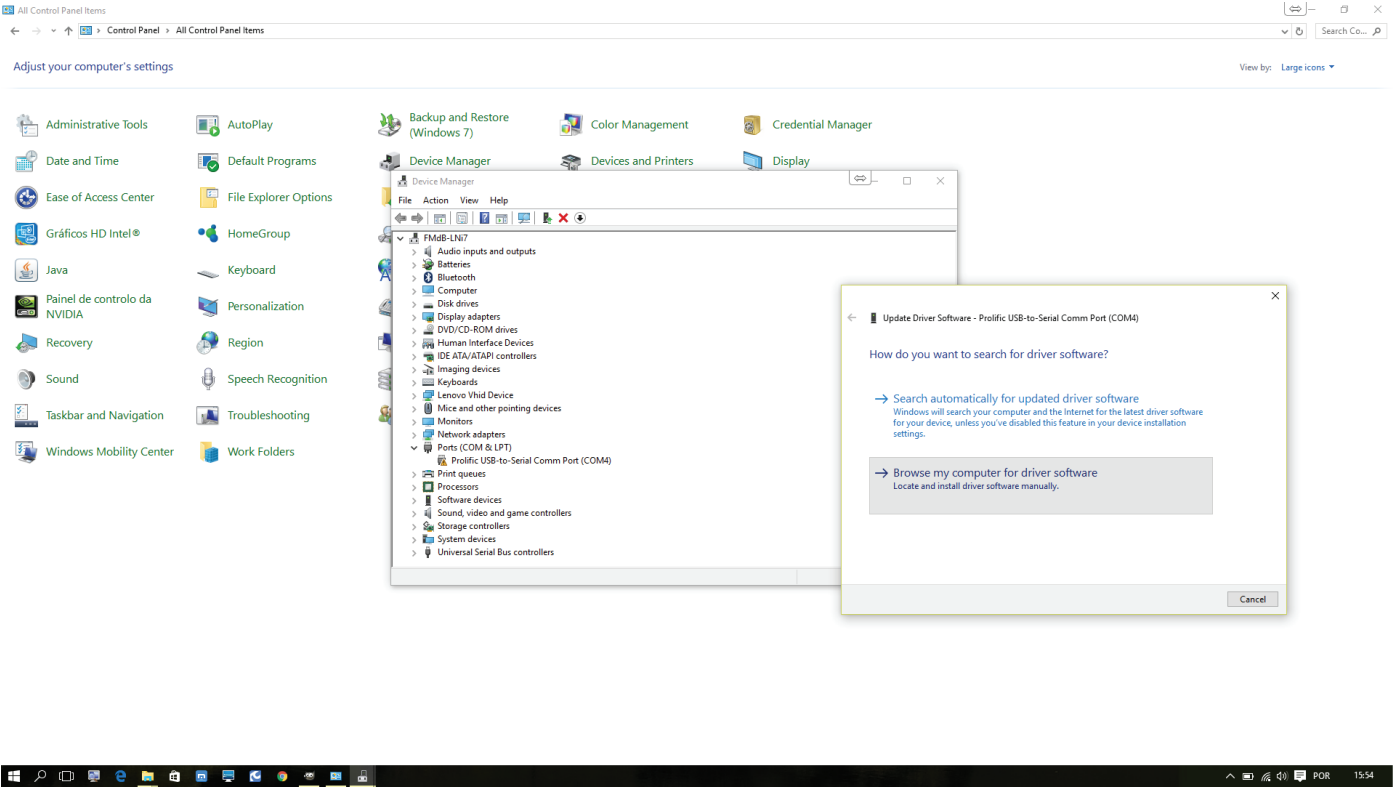
- 03.a)** Open “Control Panel”, click “Device Manager”;
- .b)** Expand “Ports (COM & LPT)”. You will see an “alert icon”;



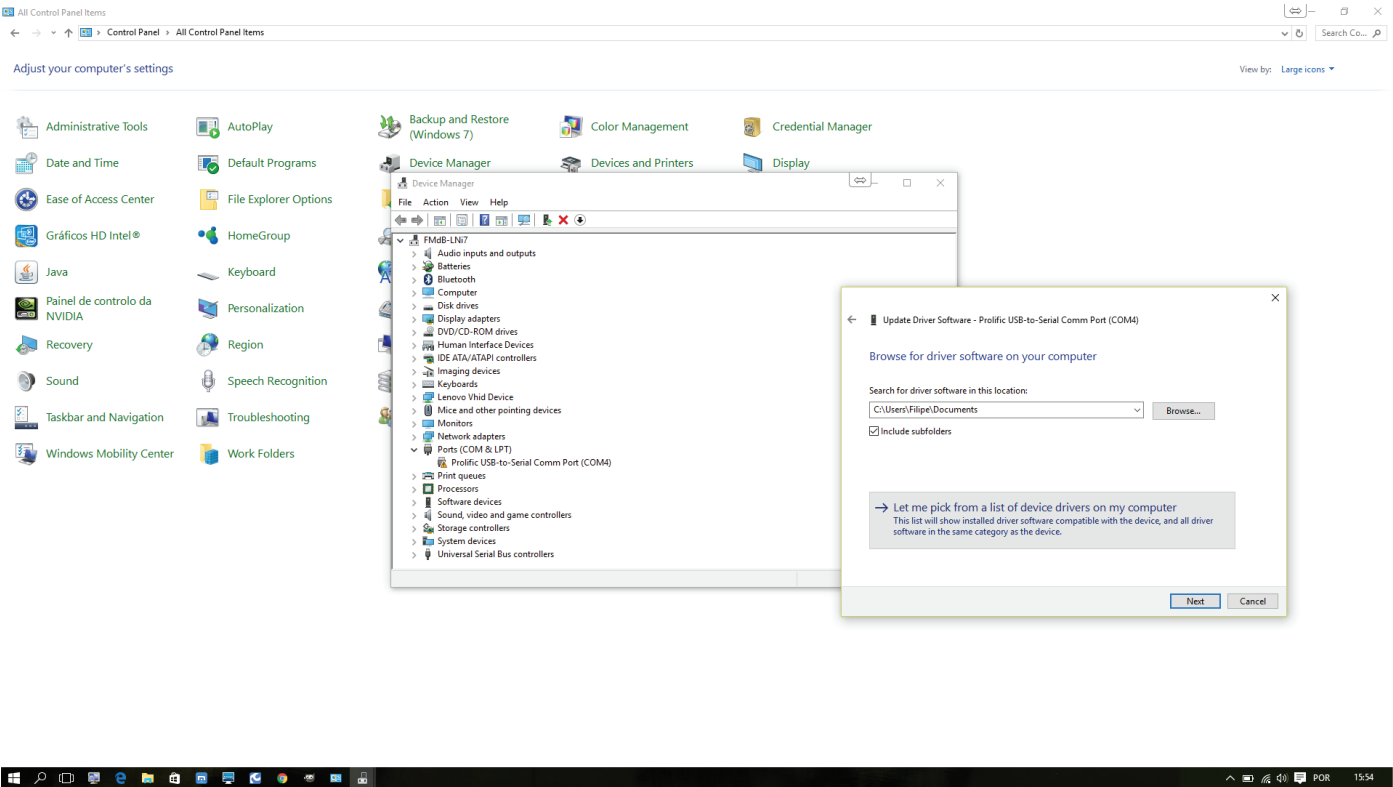
- 04.** Select “Prolific driver”, right-mouse click on it, and “Update Driver Software”



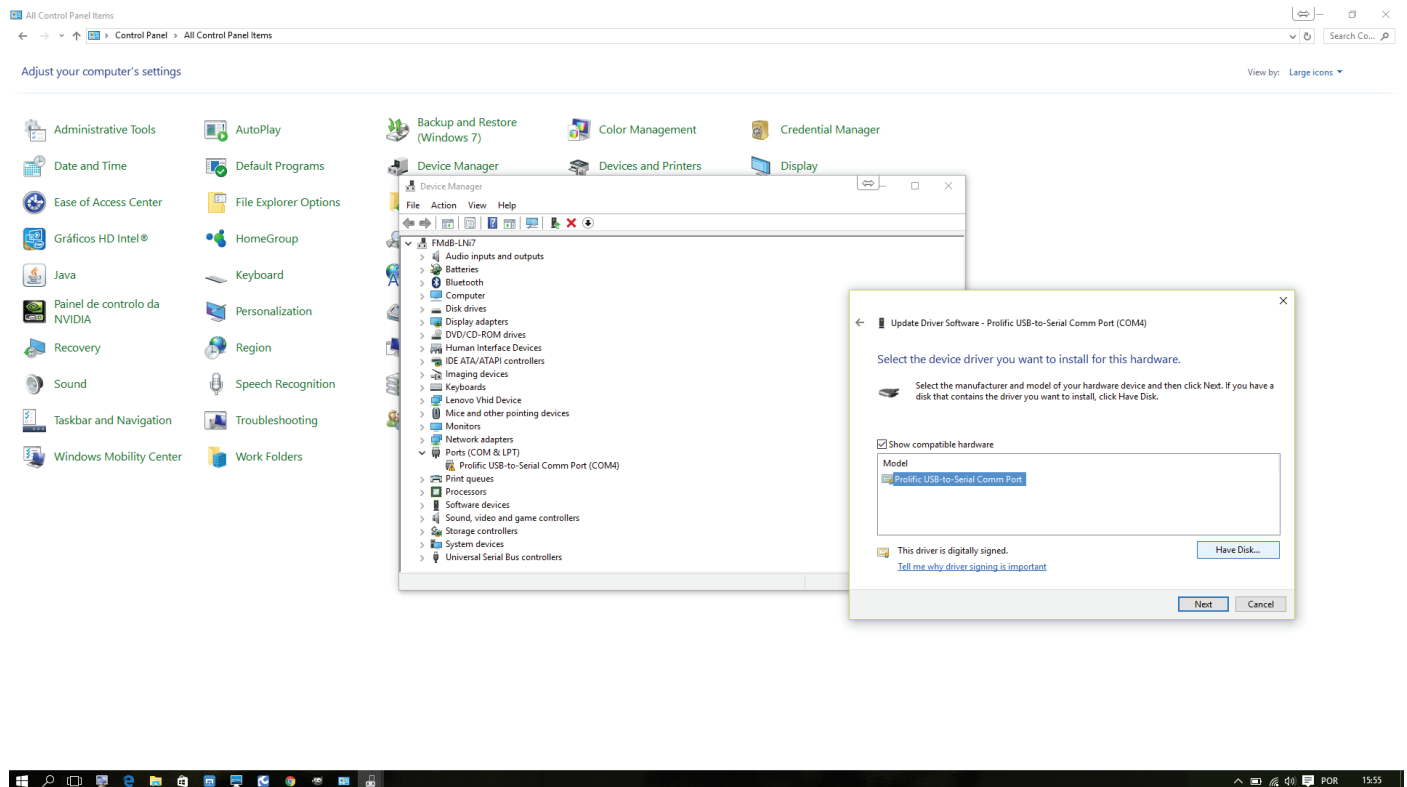
05. Click “Browse my computer for driver software”.



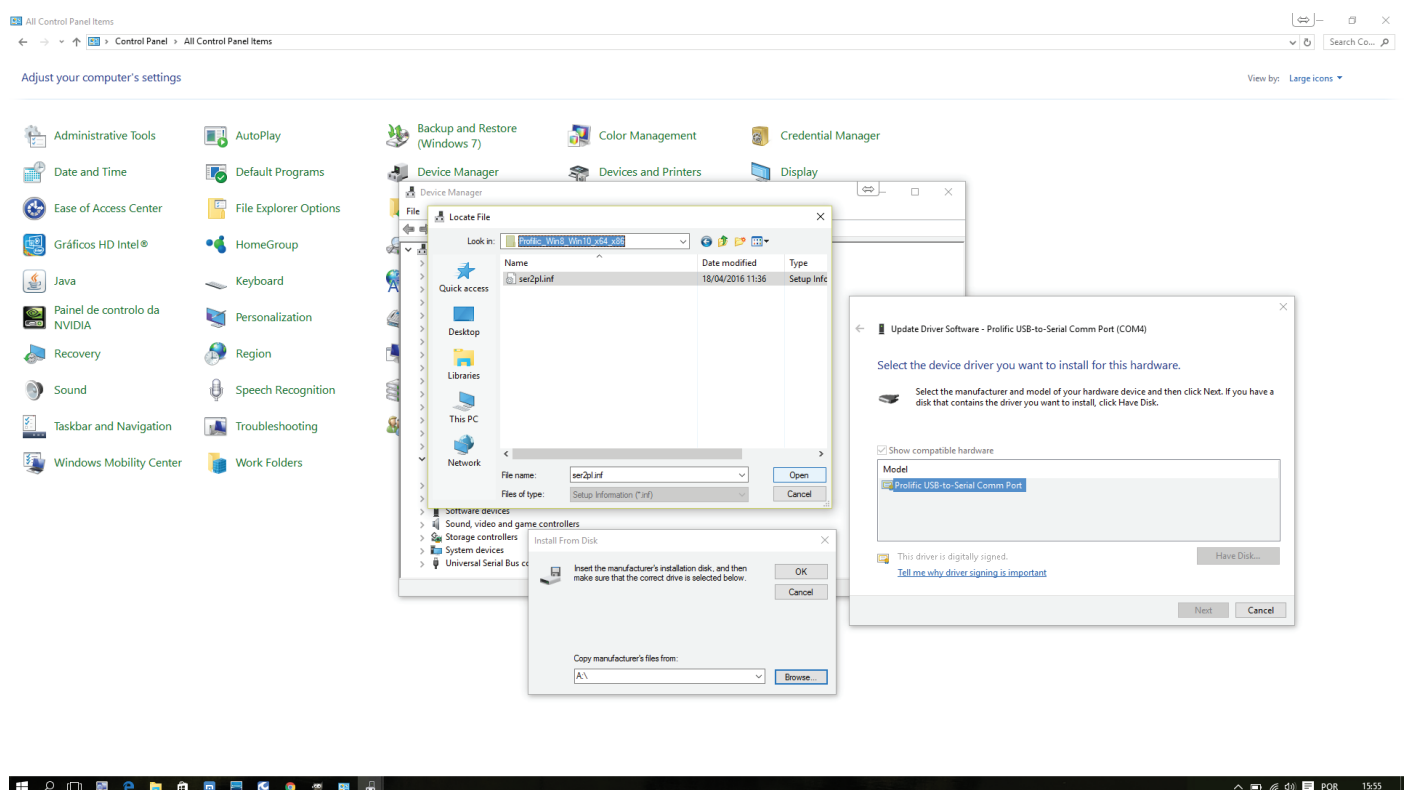
06. Click “Let me pick from a list of device drivers on my computer”



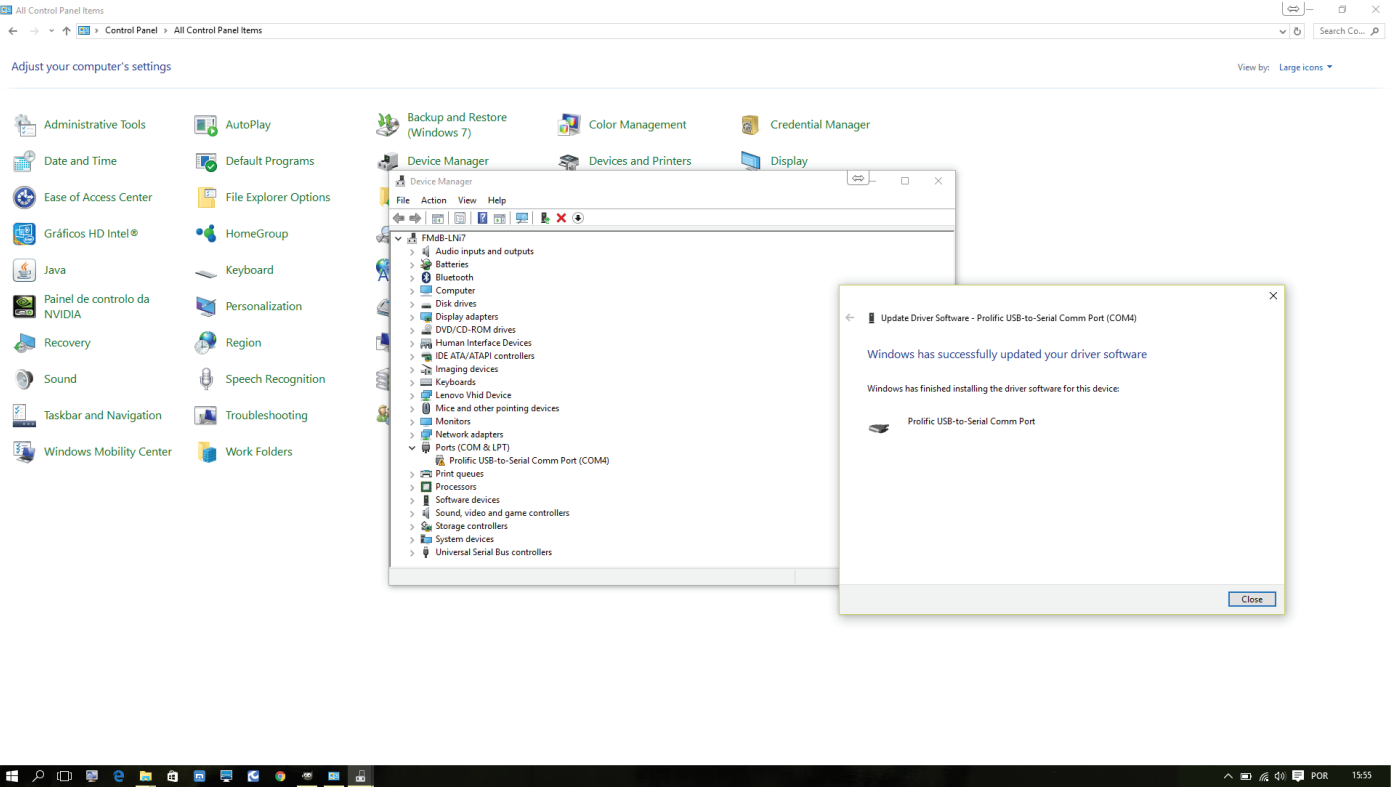
07.a) Select “Prolific USB-to-Serial Comm Port”;
.b) Click “Have Disk”;



08.a) Click “Browse”;
.b) Locate the extracted directory, and select “ser2pl.inf”. Click “Open”.



09. You should get “Windows has successfully updated your driver software”.



10. Now, the “alert icon” is gone, from “Prolific driver”.
Installation Completed.

